



EXISTING LAND USE
- Subarea 2 -

Legend

- Subarea 2 Boundary
- Village Boundary
- Building Outlines
- CWA Boundary
- Community Bike Plan
- Bike Path - Class I
- Bike Lane - Class II
- Bike Way - Class IV
- Community Trail System
- Community Trails
- Existing Trails
- Regional Trails
- Existing Trails
- Mobility Element
- Expressway
- Prime Arterial
- Major Road
- Boulevard
- Community Collector
- Light Collector
- Minor Collector
- Local Public Road
- General Plan Designations
- VR-30
- VR-24
- VR-20
- VR-15
- VR-10.9
- VR-7.3
- VR-4.3
- VR-2.9
- VR-2
- VR-0.5
- SR-1
- SR-2
- SR-4
- SR-10
- RL-20
- RL-40
- RL-80
- Specific Plan Area
- Office Professional
- Neighborhood Commercial
- General Commercial
- Rural Commercial
- Limited Impact Industrial
- Medium Impact Industrial
- High Impact Industrial
- Village Core Mixed Use
- Public/Semi-Public Facilities
- Public/Semi-Public Lands (Solid Waste Facility)
- Public Agency Lands
- Tribal Lands
- Open Space (Recreation)
- Open Space (Conservation)

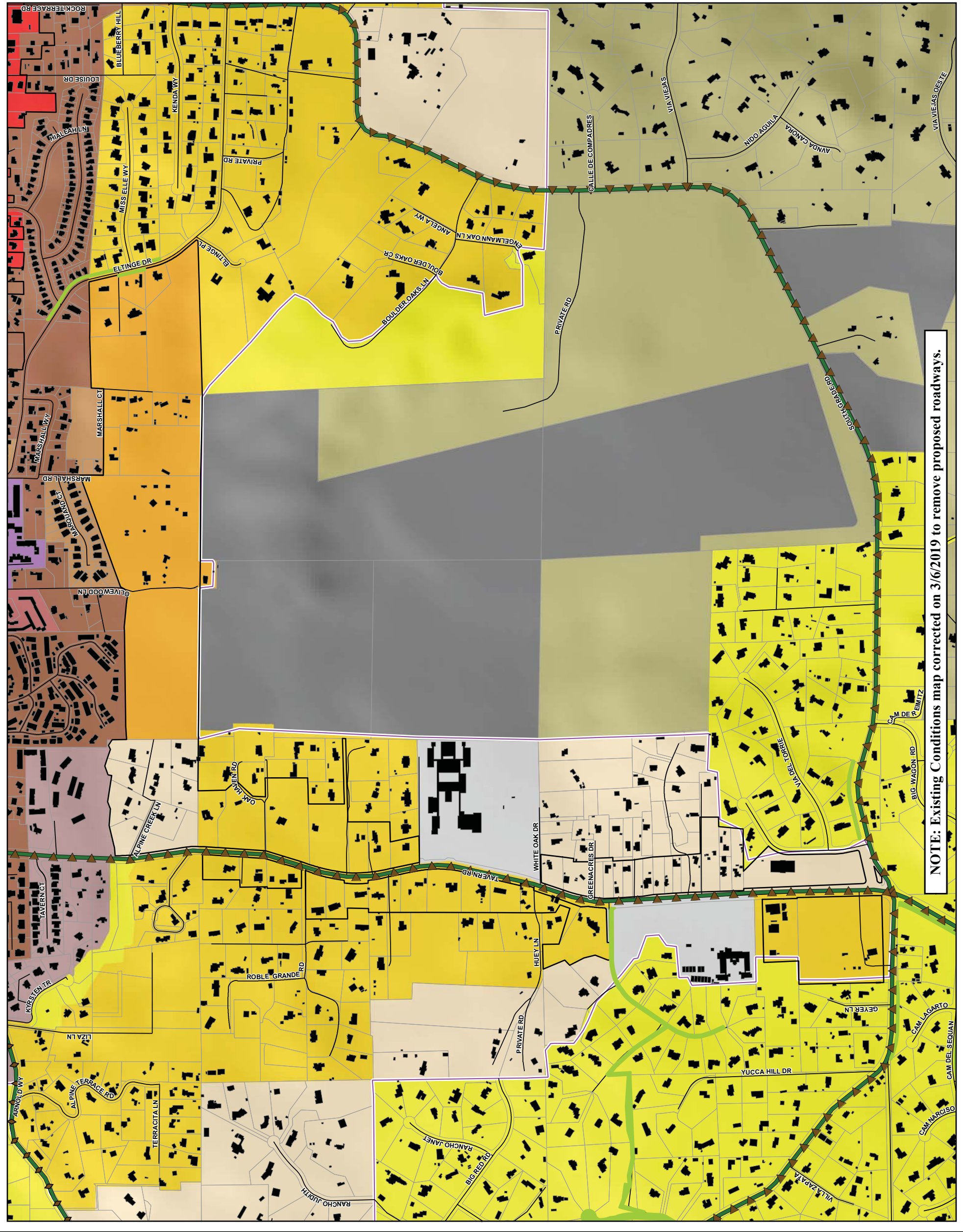
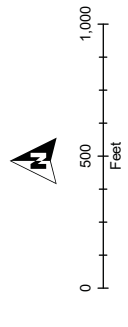
Map Prepared By:
LUJEG GIS
Landscape Urban Planning & Geospatial Information Services

ALPINE COMMUNITY PLAN UPDATE
LAND USE CONCEPTS WORKSHOP
JANUARY 26, 2019

THIS MAP IS A PRELIMINARY CONCEPTUAL MAP AND IS NOT A LEGAL DOCUMENT. IT IS FOR INFORMATIONAL PURPOSES ONLY. THE COUNTY OF SAN DIEGO DOES NOT WARRANT THE ACCURACY OR COMPLETENESS OF THE INFORMATION, DATA, OR MATERIALS HEREON. THE COUNTY OF SAN DIEGO SHALL NOT BE LIABLE FOR ANY DAMAGES, INCLUDING REASONABLE ATTORNEY'S FEES, ARISING FROM THE USE OF THIS MAP. THE USER OF THIS MAP SHALL BE RESPONSIBLE FOR OBTAINING ALL NECESSARY PERMITS AND APPROVALS FROM THE APPROPRIATE AGENCIES. THE COUNTY OF SAN DIEGO SHALL NOT BE RESPONSIBLE FOR ANY DAMAGES, INCLUDING REASONABLE ATTORNEY'S FEES, ARISING FROM THE USE OF THIS MAP.

Map Report Date: 3/20/19

Alpine CPA Vicinity Map



NOTE: Existing Conditions map corrected on 3/6/2019 to remove proposed roadways.



Alpine Community Plan Update
Land Use Concepts Workshop
January 26, 2019

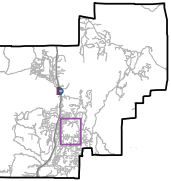
MODERATE ALTERNATIVE

- Subarea 2 -

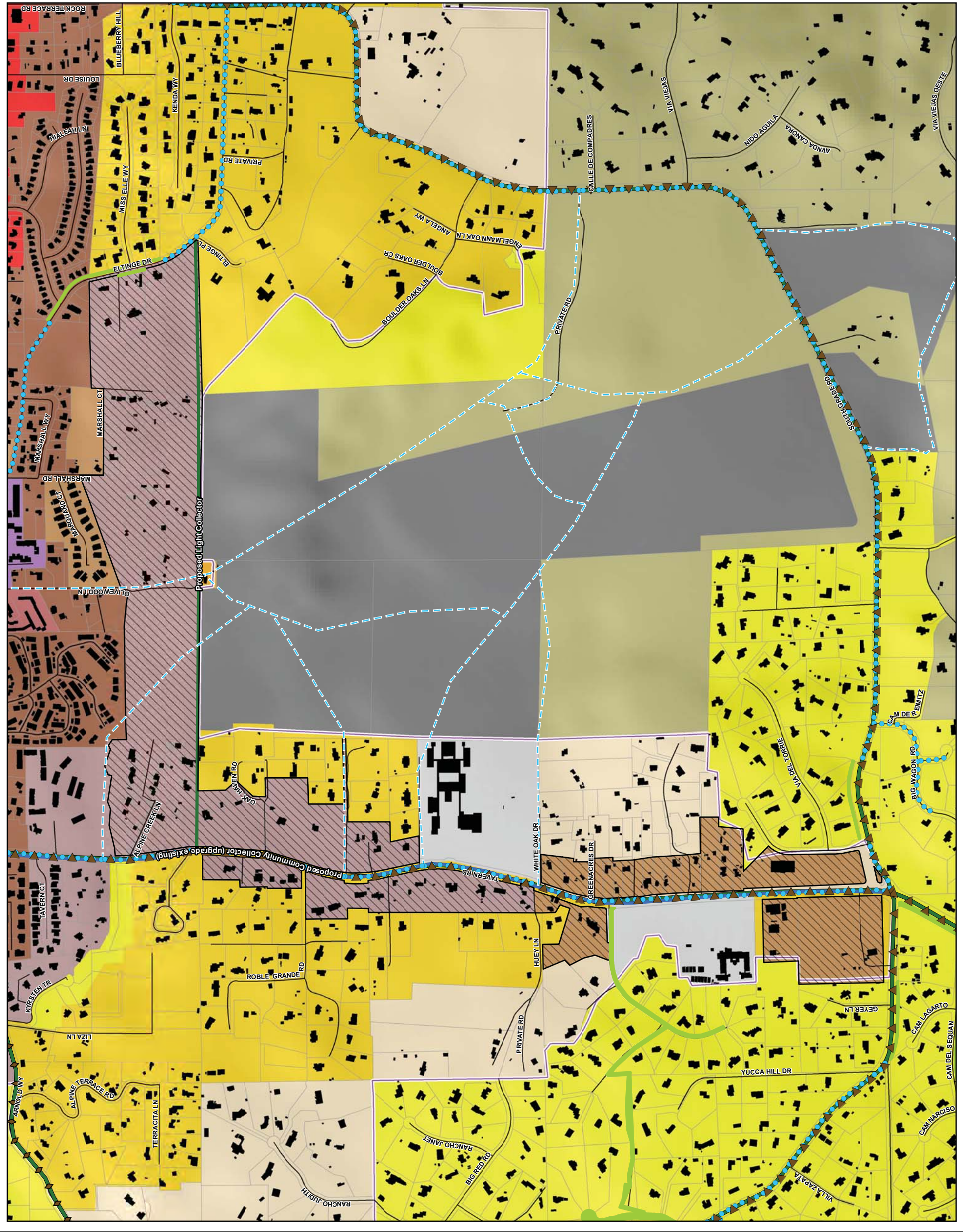
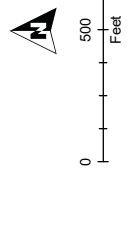
Legend

- Subarea 2 Boundary
- Village Boundary
- Proposed Change in Density
- Building Outlines
- CWA Boundary
- Community Bike Plan
- Bike Path - Class I
- Bike Lane - Class II
- Bike Way - Class IV
- Community Trails System
- Community Trails
 - Proposed Trails
 - Proposed Pathways
 - Proposed Connection
 - Existing Trails
- Mobility Element
 - Proposed Connection
 - Expressway
 - Prime Arterial
 - Major Road
 - Boulevard
 - Community Collector
 - Light Collector
 - Minor Collector
 - Local Public Road
- General Plan Designations
 - RL-80
 - VR-30
 - VR-24
 - VR-20
 - VR-15
 - VR-10.9
 - VR-7.3
 - VR-4.3
 - VR-2.9
 - VR-2
 - SR-0.5
 - SR-1
 - SR-2
 - SR-4
 - SR-10
 - RL-20
 - RL-40
- Specific Plan Area
- Office Professional
- Neighborhood Commercial
- General Commercial
- Rural Commercial
- Limited Impact Industrial
- Medium Impact Industrial
- High Impact Industrial
- Village Core Mixed Use
- Public/Semi-Public Facilities
- Public/Semi-Public Lands (Solid Waste Facility)
- Public Agency Lands
- Tribal Lands
- Open Space (Recreation)
- Open Space (Conservation)

Map Prepared By: **LUJEG GIS**
Landscape Urban Planning & Engineering Group
Geographic Information Systems



Map Report Date: 8/20/19
Document Path: P:\01\01816 - Alpine_CPA\Map\GIS\Map\01_01816\MapArea_Alt_Moderate_Alt_2_0181901.mxd



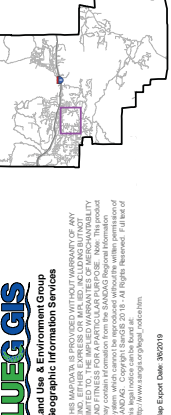


HIGH ALTERNATIVE
- Subarea 2 -

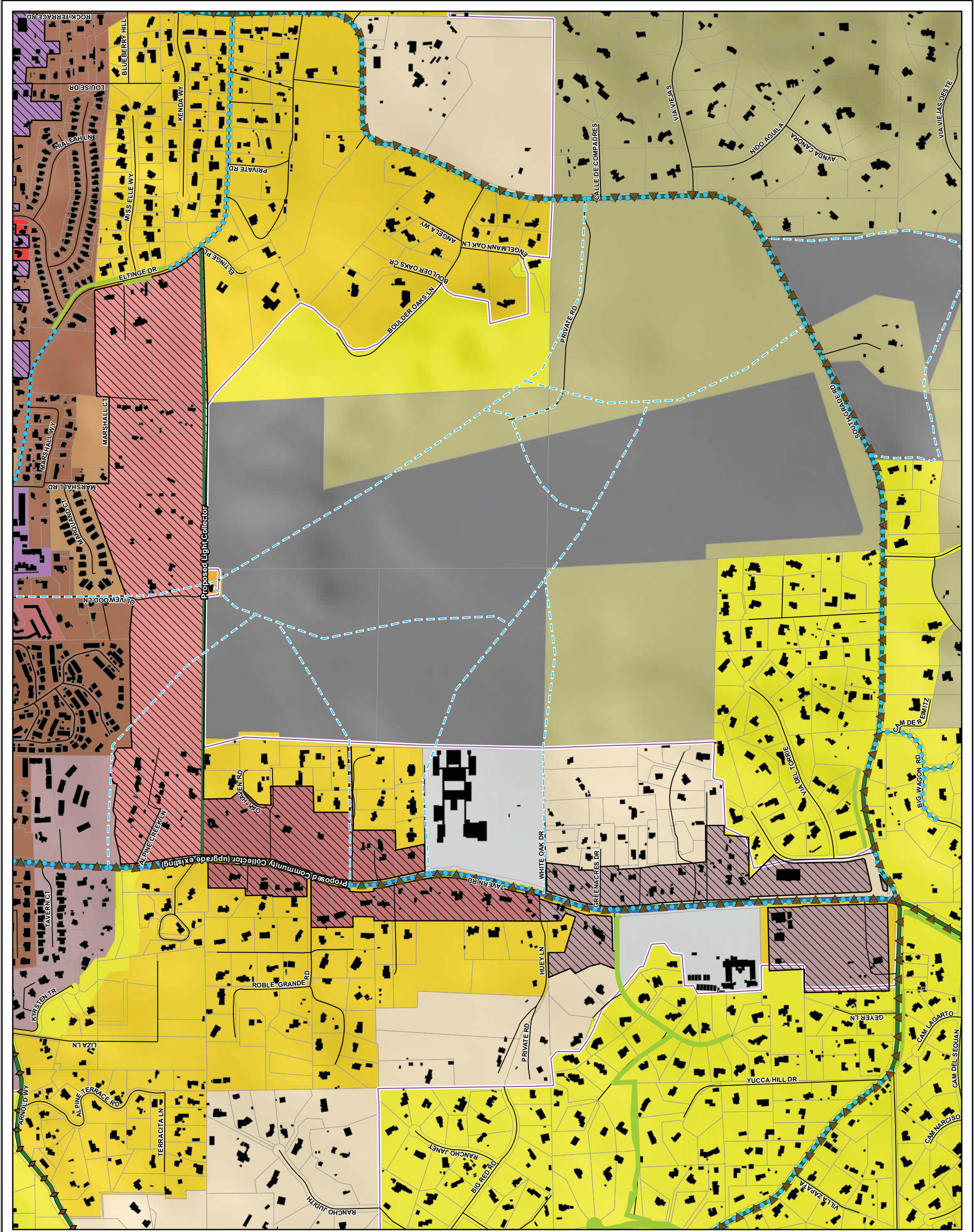
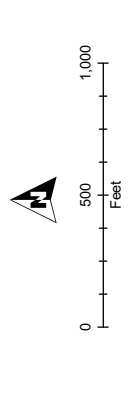
Legend

- Subarea 2 Boundary
- Village Boundary
- Proposed Change in Density
- Building Outlines
- CWA Boundary
- Community Bike Plan
- Bike Path - Class I
- Bike Lane - Class II
- Bike Way - Class IV
- Community Trails System
- Community Trails
 - Proposed Trails
 - Existing
 - Proposed Pathways
 - Proposed Connection
 - Existing Trails
- Mobility Element
 - Proposed Connection
 - Expressway
 - Prime Arterial
 - Major Road
 - Boulevard
 - Community Collector
 - Light Collector
 - Minor Collector
 - Local Public Road
- General Plan Designations
 - VR-80
 - VR-30
 - VR-24
 - VR-20
 - VR-15
 - VR-10.9
 - VR-7.3
 - VR-4.3
 - VR-2.9
 - VR-2
 - SR-0.5
 - SR-1
 - SR-2
 - SR-4
 - SR-10
 - RL-20
 - RL-40
 - Specific Plan Area
 - Office Professional
 - Neighborhood Commercial
 - General Commercial
 - Rural Commercial
 - Limited Impact Industrial
 - Medium Impact Industrial
 - High Impact Industrial
 - Village Core Mixed Use
 - Public/Semi-Public Facilities
 - Public/Semi-Public Lands (Solid Waste Facility)
 - Public Agency Lands
 - Tribal Lands
 - Open Space (Recreation)
 - Open Space (Conservation)

Map Prepared By: **LUJEG GIS**
Landscape Urban Planning & Engineering Group
Geographic Information Systems



Map Report Date: 8/20/19



THIS MAP IS A REPRESENTATION OF THE COUNTY OF SAN DIEGO'S BEST AVAILABLE INFORMATION AND IS NOT A GUARANTEE OF ACCURACY. THE COUNTY OF SAN DIEGO AND ITS EMPLOYEES MAKE NO WARRANTY, REPRESENTATION, OR GUARANTEE OF ANY KIND, EXPRESS OR IMPLIED, REGARDING THE ACCURACY, COMPLETENESS, OR RELIABILITY OF THE INFORMATION PROVIDED ON THIS MAP. THE COUNTY OF SAN DIEGO AND ITS EMPLOYEES SHALL NOT BE LIABLE FOR ANY DAMAGES, INCLUDING CONSEQUENTIAL DAMAGES, ARISING FROM THE USE OF THIS MAP. THE INFORMATION ON THIS MAP IS PROVIDED AS IS AND WITHOUT WARRANTY OF ANY KIND. THE COUNTY OF SAN DIEGO AND ITS EMPLOYEES SHALL NOT BE LIABLE FOR ANY DAMAGES, INCLUDING CONSEQUENTIAL DAMAGES, ARISING FROM THE USE OF THIS MAP.



**Alpine Community Plan Update
Land Use Concepts Workshop
January 26, 2019**

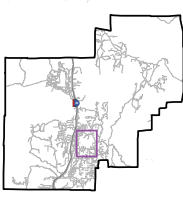
COMMUNITY WORKSHOP RECOMMENDATION

**- Subarea 2 -
Existing Land Use**

Legend

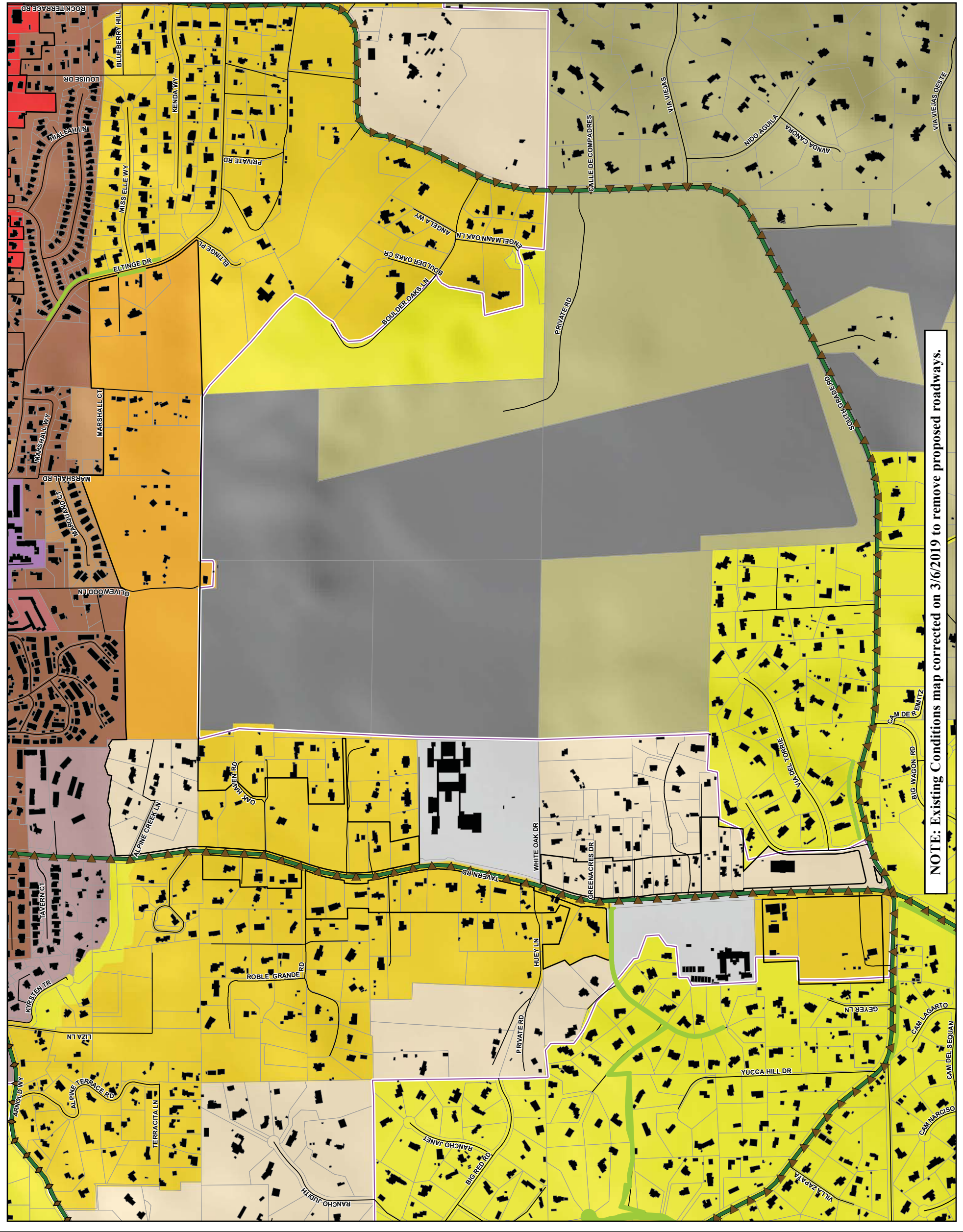
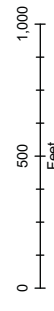
- Subarea 2 Boundary
- Village Boundary
- Building Outlines
- CWA Boundary
- Community Bike Plan
- Bike Path - Class I
- Bike Lane - Class II
- Bike Way - Class IV
- Community Trail System
- Community Trails
 - Existing Trails
- Mobility Element
 - Expressway
 - Prime Arterial
 - Major Road
 - Boulevard
 - Community Collector
 - Light Collector
 - Minor Collector
 - Local Public Road
- General Plan Designations
 - VR-30
 - VR-24
 - VR-20
 - VR-15
 - VR-10.9
 - VR-7.3
 - VR-4.3
 - VR-2.9
 - VR-2
 - VR-0.5
 - SR-1
 - SR-2
 - SR-4
 - SR-10
 - RL-20
 - RL-40
 - RL-80
 - Specific Plan Area
 - Office Professional
 - Neighborhood Commercial
 - General Commercial
 - Rural Commercial
 - Limited Impact Industrial
 - Medium Impact Industrial
 - High Impact Industrial
 - Village Core Mixed Use
 - Public/Semi-Public Facilities
 - Public/Semi-Public Lands (Solid Waste Facility)
 - Public Agency Lands
 - Tribal Lands
 - Open Space (Recreation)
 - Open Space (Conservation)

Map Prepared By: **LUJEG GIS**
Landscape Urban Planning & Geospatial Information Services



THIS MAP IS A REPRESENTATION OF THE COUNTY OF SAN DIEGO'S BEST AVAILABLE DATA. THE COUNTY OF SAN DIEGO DOES NOT WARRANT THE ACCURACY, COMPLETENESS, OR TIMELINESS OF THE INFORMATION SHOWN ON THIS MAP. THE COUNTY OF SAN DIEGO IS NOT RESPONSIBLE FOR ANY ERRORS OR OMISSIONS THAT MAY APPEAR ON THIS MAP. THE COUNTY OF SAN DIEGO IS NOT RESPONSIBLE FOR ANY DAMAGES, INCLUDING CONSEQUENTIAL DAMAGES, ARISING FROM THE USE OF THIS MAP. THE COUNTY OF SAN DIEGO IS NOT RESPONSIBLE FOR ANY DAMAGES, INCLUDING CONSEQUENTIAL DAMAGES, ARISING FROM THE USE OF THIS MAP.

Map Report Date: 3/20/19



NOTE: Existing Conditions map corrected on 3/6/2019 to remove proposed roadways.